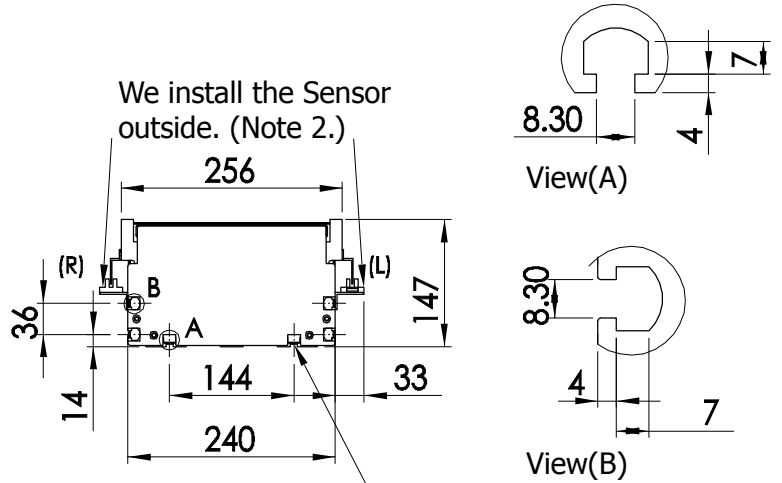


<JDB-240> Specification of Direct Type

- Note:1.The dimension of machine changes according to different motor,The motor lid is optional accessory.
 2.Applicable motor:100W,200W,400W,750W,1KW.
 3.We install the sensor outside.(right or left side)(optional accessory)



The distance of mounting hole is fixed Screw-in insert type M8 screw nut.

SENSOR Operation:

- 1.+LS
- 2.HOME
- 3.-LS

Unit:mm

Stroke	500	600	700	800	900	1000	1100	1200	1300	1400	1500	1600	1700	1800	1900	2000	2100	2200
L	1017	1117	1217	1317	1417	1517	1617	1717	1817	1917	2017	2117	2217	2317	2417	2517	2617	2717
A	4	4	5	5	6	6	8	8	9	9	10	10	11	11	12	12	13	13
B	100	200	100	200	100	200	100	200	100	200	100	200	100	200	100	200	100	200
N	12	12	14	14	16	16	18	18	20	20	22	22	24	24	26	26	28	28
Weight(kg)	39.9	42.8	45.7	48.6	51.4	54.4	57.3	60.2	63.1	66.0	68.9	71.8	74.7	77.6	80.5	83.4	86.3	89.2
Rpm	3000	3000	3000	2000	2000	2000	2000	1500	1500	1500	1500	1500	1500	1200	1200	1200	1000	1000