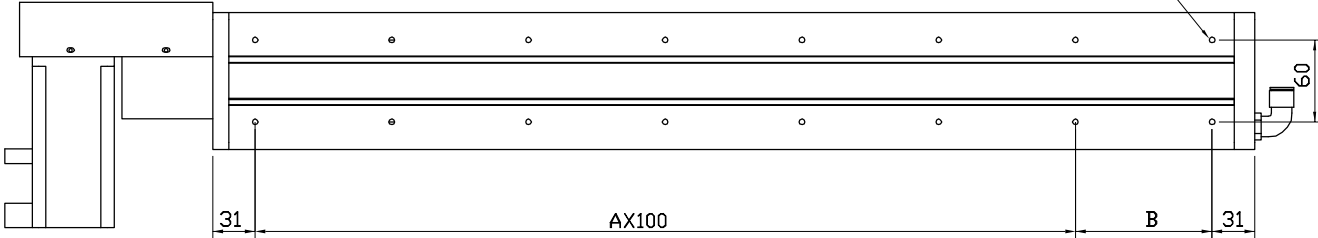
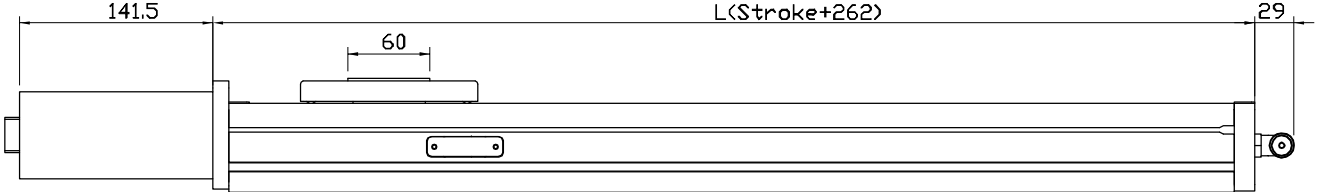
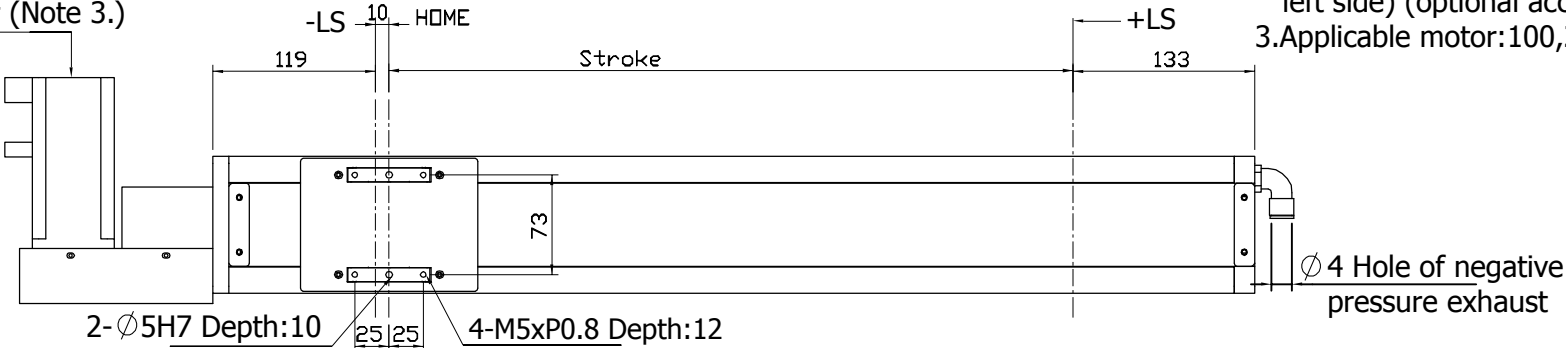


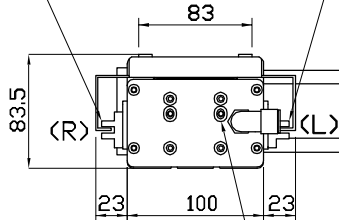
# <JDTNS-100> Specification

- Note: 1. The dimension of motor can be BL or BR  
 2. We install the sensor outside. (right or left side) (optional accessory)  
 3. Applicable motor: 100, 200W, 400W.

200W motor (Note 3.)



The outer sensor. (Note 2.)



Screw for adjustment of belt tension x2.

SENSOR Operation:

- 1.+LS
- 2.HOME
- 3.-LS

Unit:mm

Stroke	100	200	300	400	500	600	700	800	900	1000	1100	1200
L	362	462	562	662	762	862	962	1062	1162	1262	1362	1462
A	2	3	4	5	6	7	8	9	10	11	12	13
B	100	100	100	100	100	100	100	100	100	100	100	100
N	8	10	12	14	16	18	20	22	24	26	28	30
Weight(kg)	5.9	6.9	7.9	8.9	9.9	10.9	11.9	12.9	13.9	14.9	15.9	16.9